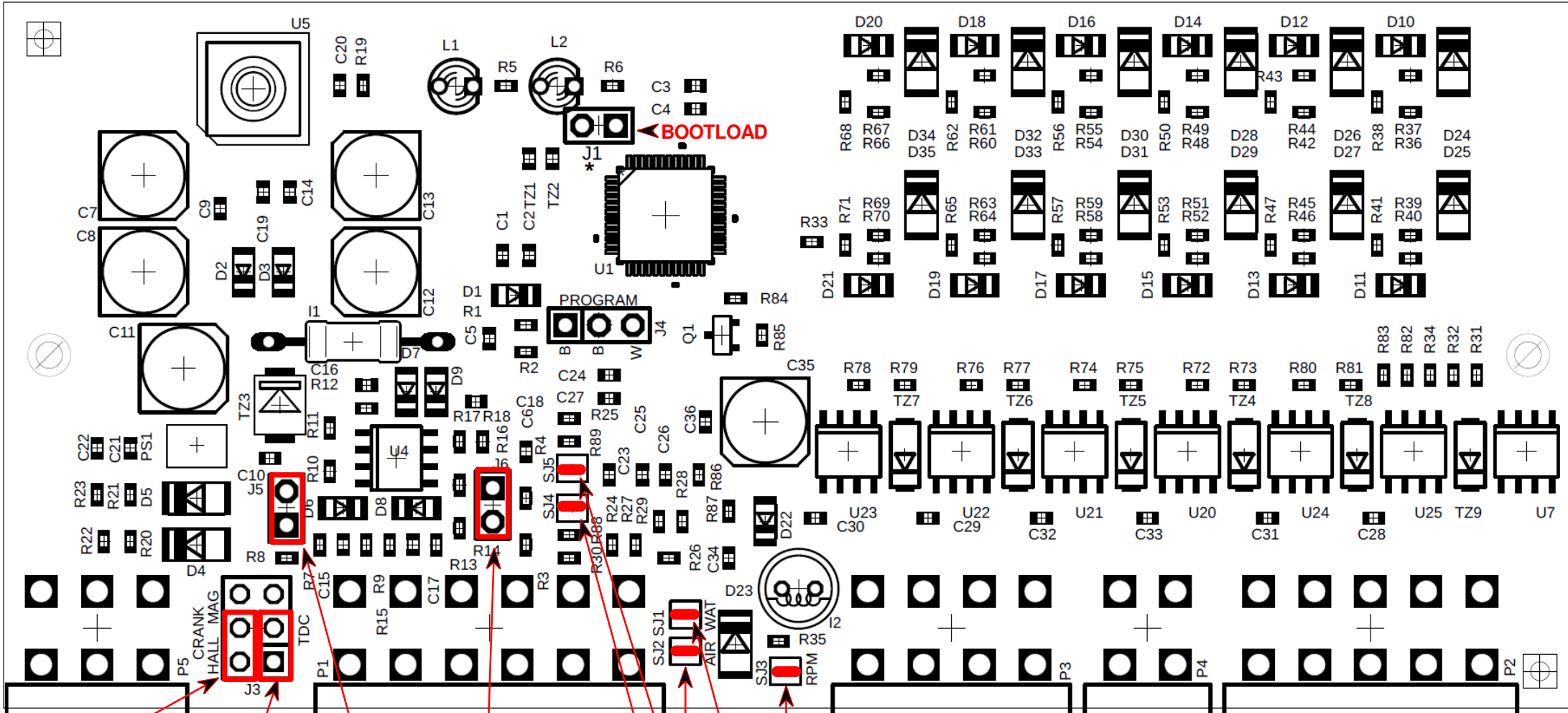


EZ62B Callisto TCU Jumper Settings

Last Changed: 27/09/2025

PCB: EZ62B



RPM Sensor
Up - Magnetic
Down - Hall

Speed Sensor
Up - Magnetic
Down - Hall

RPM Sensor
Off - Magnetic
On - Hall Pullup

Speed Sensor
Off - Magnetic
On - Hall Pullup

Solder Jumpers ECU

SJ1 = Water Sensor Pullup - **Close**

SJ2 = Air Sensor Pullup - **Close**

SJ3 = RPM Pullup - **Close**

SJ4 = Lambda Pullup - **Close**

SJ5 = Map Pullup - **Close**